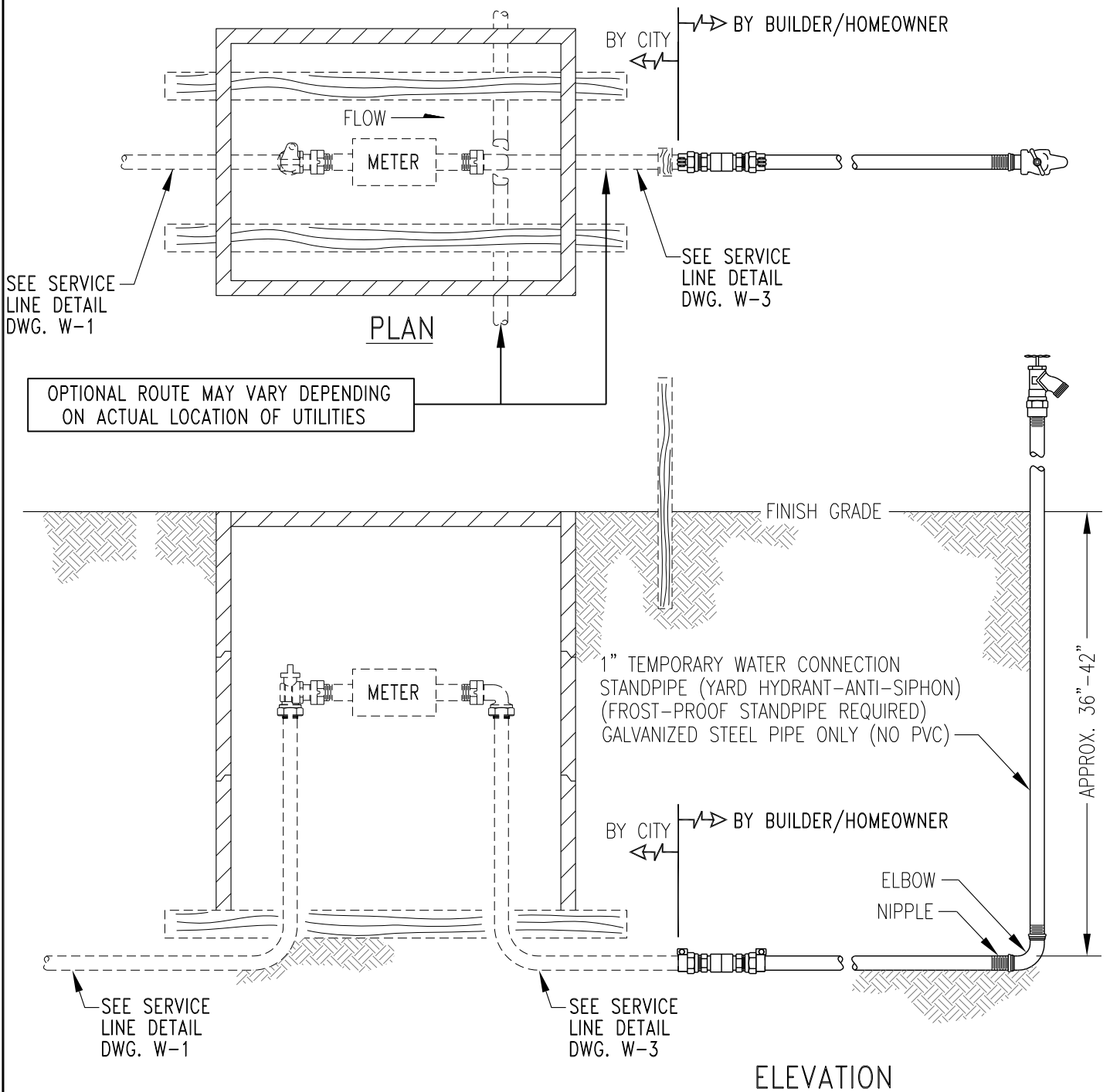


**BUILDER IS RESPONSIBLE FOR THE WATER SERVICE IF DAMAGED - A \$300.00 MINIMUM FEE WILL BE CHARGED. \* ADDITIONAL FEES MAY BE CHARGED FOR EXTENSIVE DAMAGE OVER \$300.00.**



**WATER SERVICE CONNECTION FOR NEW RESIDENTIAL LOT**

PUBLIC WORKS ENGINEERING	
APPR. BY: PKR	DATE: 03.2012
DRAWN BY: SC NYBY	DWG: W18
CAD FILE: 2012_W18_03_2012	