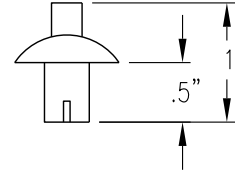


SIGN POST
10', 12', or 14'
AS REQUIRED



WT. .018/C

DRIVE RIVET

DRIVE RIVET
2 - REQ'D

FINISHED
GRADE

2"

4"

18" MIN

30"

36" BASE POST

COMMERCIAL CONCRETE

9" DIAM.

NOTES:

1. POSTS SHALL BE TELESAR BRAND SQUARE TUBING OR APPROVED EQUAL. SIGN POST MUST BE BREAK AWAY AND ACCEPTABLE PER NCHRP 350.
2. POSTS SHALL BE COLD ROLLED STEEL WITH PERFORATION OF .4375 INCH DIAMETER ON ONE INCH CENTERS ON ALL FOUR SIDES.
3. POST SHALL EMPLOY A YIELDING BREAKAWAY SYSTEM CONSISTING OF A BASE POST AND SIGN POST.
4. ALL FASTENINGS OF TUBING JOINTS AND CONNECTIONS SHALL UTILIZE A MINIMUM OF TWO DRIVE RIVETS UNLESS OTHERWISE SPECIFIED. RIVETS SHALL BE ON ADJOINING FACES OF POST NOT OPPOSITE SIDES AND SHALL NOT USE WASHERS.
5. GALVANIZED COATING SHALL CONFORM TO A.S.T.M. SPECIFICATION A-525, DES. G-90.
6. IF BASE THAT IS USED HAS CONTINUOUS HOLES, THE HOLES MUST BE COVERED PRIOR TO INSTALLATION TO PREVENT THE BASE FROM BEING FILLED WITH CONCRETE OR OTHER MATERIAL.
7. CONCRETE POURED BASES SHALL BE USED UNLESS OTHERWISE APPROVED BY THE TRAFFIC ENGINEER (e.g. MECHANICALLY DRIVEN).

PART	TUBE SIZE	MIN. WALL THICKNESS	LENGTH
BASE POST	2.25" x 2.25"	12 GAGE	36 INCH
SIGN POST	2" x 2"	12 GAGE	10', 12', or 14' AS REQ'D.



**TYPICAL
SIGN POST**

PUBLIC WORKS ENGINEERING

APPR. BY: PKR

DATE: 06.18

DRAWN BY: EY

DWG: ST23

CAD FILE: 2018_ST23_06_2018